



Bring Cost Effectiveness to IT Networks

The Power of Integration

Codima IT Inventory & Mapping Toolbox delivers extensive network inventory reports and automatically generates Microsoft® Office Visio® views showing the network topology. With its many capabilities including a pinger, protocol and passive analysis as well as remote management, the toolbox has a short payback time span.

Automate Manual Tasks

With its fully automated processes, Codima IT Inventory & Mapping Toolbox contributes to real time savings hence lowering IT costs by automating asset inventory and network visualization.

Use Accurate Data

The toolbox uses current network asset information obtained from network devices to provide an accurate IT asset inventory and produce a wide range of advanced assets reports available in HTML, CSV, TSV and XLS format. The discovery can run across multiple networks helping to control networks at remote locations.

Visualize Entire IT Networks

Using the discovery information generated by Codima Discovery Engine™, the web-based topology drawings are created directly in Microsoft® Office Visio®, which provides the advantage of automation. Users only need to access relevant Visio® functions. The Codima world class algorithm enables users to map even large networks without getting into a tangle. Vendors can be uniquely colored and VM Ware systems highlighted in the Visio® maps to provide clearer topology views.

Investigate Using Visio® Maps

The intuitive maps show device connection and include vital information such as the line speed and port descriptions. The maps also cover Spanning Tree, Subnet and VLAN topologies. Performing a VLAN Analysis is critical for analyzing modern Layer 2/3 networks which are highly dependent on VLANs. Vendors can also be uniquely colored to provide clearer views.

Track Joiners and Leavers

The Change Control function improves network security by tracking topology changes between discovery runs documenting what devices have left and joined the network.

Check On Key Devices

The integrated pinger facility reports device failure via emails, SMS text messages and SNMP Traps, speeding up failure detection. The failures are also displayed directly on the Visio® maps, making it easy to spot the root cause. There is also an audio report system that eliminates the need to watch a pinger console.

Analyze Network Traffic

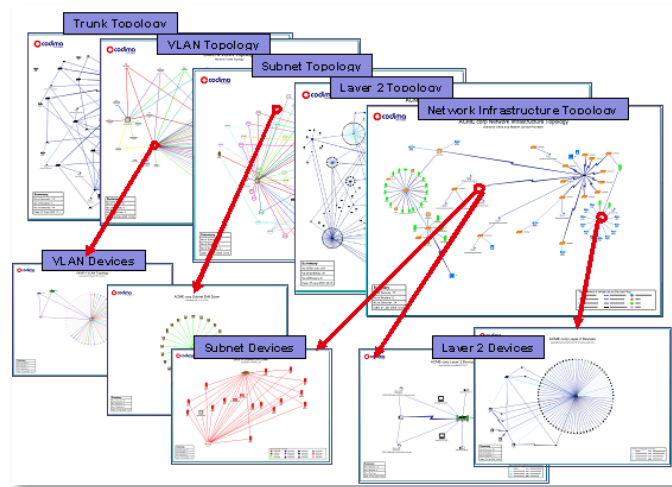
Codima IT Inventory & Mapping Toolbox allows users for example to monitor traffic trends and find top talkers. The comprehensive real time protocol analysis tool analyzes the frames it passively monitors, to produce easy to read Protocol decode displays. The passive analysis tool provides real time views covering loading, priority, protocols, frame size and ICMP trends.

Easy to Use Centralized Reports

Accessible from a single point, the Reports Manager produces statistical and historical charts for the toolbox in Microsoft® Word and as instant HTML pages.

Network Awareness Reduces IT Costs

While IT asset inventory and network documentation products have been regarded as nice to have, the perspective has changed. Today's diminishing IT budgets and constant demand for detailed information on complex IT network infrastructures have made network awareness products must haves. Codima IT Inventory & Mapping Toolbox offers a cost effective product with short payback time.



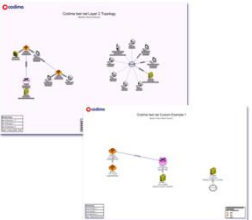
Key Features and Benefits

- 100% Integration - Reduce IT costs utilizing integrated processes and get maximum out of the network infrastructure with minimum effort
- Automated Network Inventory and Up To Date Reports - Save time and use accurate data by automatically obtaining correct information directly from network devices to improve IT budgeting, equipment rationalization and network auditing
- Easy-to-use Network Documentation - Ensure that corporate policy and legal requirements are met, tracking software installations, checking licenses and identifying illegal software to enhance compliance and network control. Help organizations to review and control their maintenance costs.
- Intuitive Maps in Visio® - Make it easy to track historical changes, identify vendors, view network problems live as well as view, share and present complex asset information, with maps created directly in Microsoft® Office Visio®
- Comprehensive Network Analysis - Take advantage of in-depth real time analysis and view real time live views of traffic patterns to reduce expensive network downtime affecting business operations
- Centralized Report System - Track valuable IT assets and traffic patterns and increase information flow proactively managing the network using customizable trend reports
- A Complete Solution Built From Ground Up - Ensure that IT expertise are spending time on important cost reducing strategic projects rather than managing and maintaining a patchwork of third party software



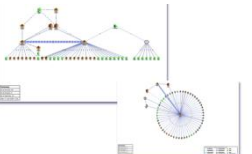
Asset Inventory & Reports

Codima Discovery Engine™ discovers software and devices on any IT network. Valuable asset inventory reports are produced in HTML. The Change Control Facility highlights changes that have occurred on the network between discovery runs. Protocols in use include SNMP, SIP, NetBIOS, ICMP and rDNS, as well as proprietary vendor protocols such as WMI, CDP or EDP



Mapping

Maps managed and unmanaged devices - an agent less solution utilizing information already available from devices and processes on the network. Makes use of information monitored by the passive analysis tool.



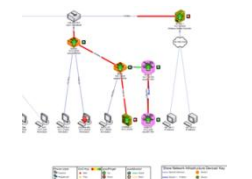
Visualizing in Visio®

Generates topology drawings directly with Microsoft® Office Visio®, visualizing any IT network. Visio® maps show ping and SNMP monitoring status, VoIP phones status and QoS. Vendors can be uniquely colored and WM Ware systems highlighted in the Visio® maps to provide clearer topology views.



Multi Site Scheduler

Sets up discovery scheduling operation from a central point and automates discovery runs across multiple sites



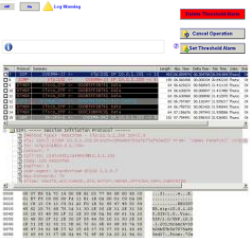
IP Pinging

Tracks device status and ping response times. Reports device failure via emails, SMS text messages and SNMP Traps and shows the ping failure results directly in the Visio® maps for easy identification of root causes. Provides innovative sound alarms giving instant warnings - no need to watch a ping console or read alarm reports. Direct access from History charts to the Automated Correlation Engine a statistic based Expert System that identifies the root cause of problems and highlights danger areas.



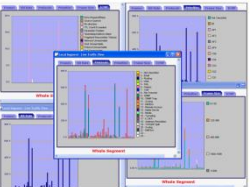
Global Alarm System

Provides a sophisticated failure detection system with flood control. Sends alarms reports as Emails or SMS text messages using an independent email client. Issues SNMP Traps.



Protocol Analysis

Provides a real time protocol decode of monitored traffic. The protocol analyzer and the filters system uses discovered names instead of raw addresses.



Passive Analysis

Provides passive monitoring of network traffic. Analyzes covers protocols, priority settings and node traffic patterns. For example you can see per node and per protocol diff serv usage. Displays live views of traffic trends, covering loading, priority, protocols, frame size and ICMP reports. Includes direct access from History charts to the statistic based Expert System Automated Correlation Engine.



Reports Manager

Creates reports in Microsoft® Word on a daily, weekly and monthly basis and on demand in HTML, using the common centralized reports system available across Codima Toolbox. Reports can be tailored to focus on selected devices or types of devices, e.g., Router or Servers. The Report display can be filtered by function and style.



Remote Manager

Enables remote management of tools

Remote probes

Monitors and analyzes traffic at remote locations - install local probes

Codima's team has a long track record of bringing highly advanced network management technology to the market.

Today Codima is recognized for tools that help organizations to reduce costs, save time and successfully manage their Data and VoIP networks.

Codima is a Microsoft® Certified Partner and a provider to Microsoft® Visio® Toolbox.

Codima is an Avaya DevConnect Gold Partner and the asset inventory, mapping, visualization and VoIP monitoring tools are tested and accepted as Avaya Compliant.

DEVELOPERCONNECTION
GOLD



Microsoft
CERTIFIED
Partner

Microsoft Visio Toolbox

Headquartered in Philadelphia with 11 local offices worldwide, Codima Toolbox resells through our partners globally.

North America
Philadelphia
ussales@codimatech.com

Asia
Tokyo
asiasales@codimatech.com

Australia
Sydney
australiasales@codimatech.com

EMEA
Brussels
Copenhagen
Dublin
London
Munich
Paris
Stockholm
emeasales@codimatech.com

Latin America
Buenos Aires
sasales@codimatech.com

To find a Codima sales office or reseller near you, visit
www.codimatech.com/products_howtobuy.php

www.codimatech.com